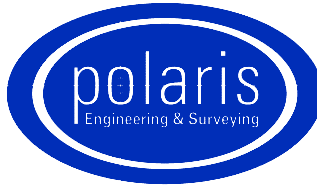


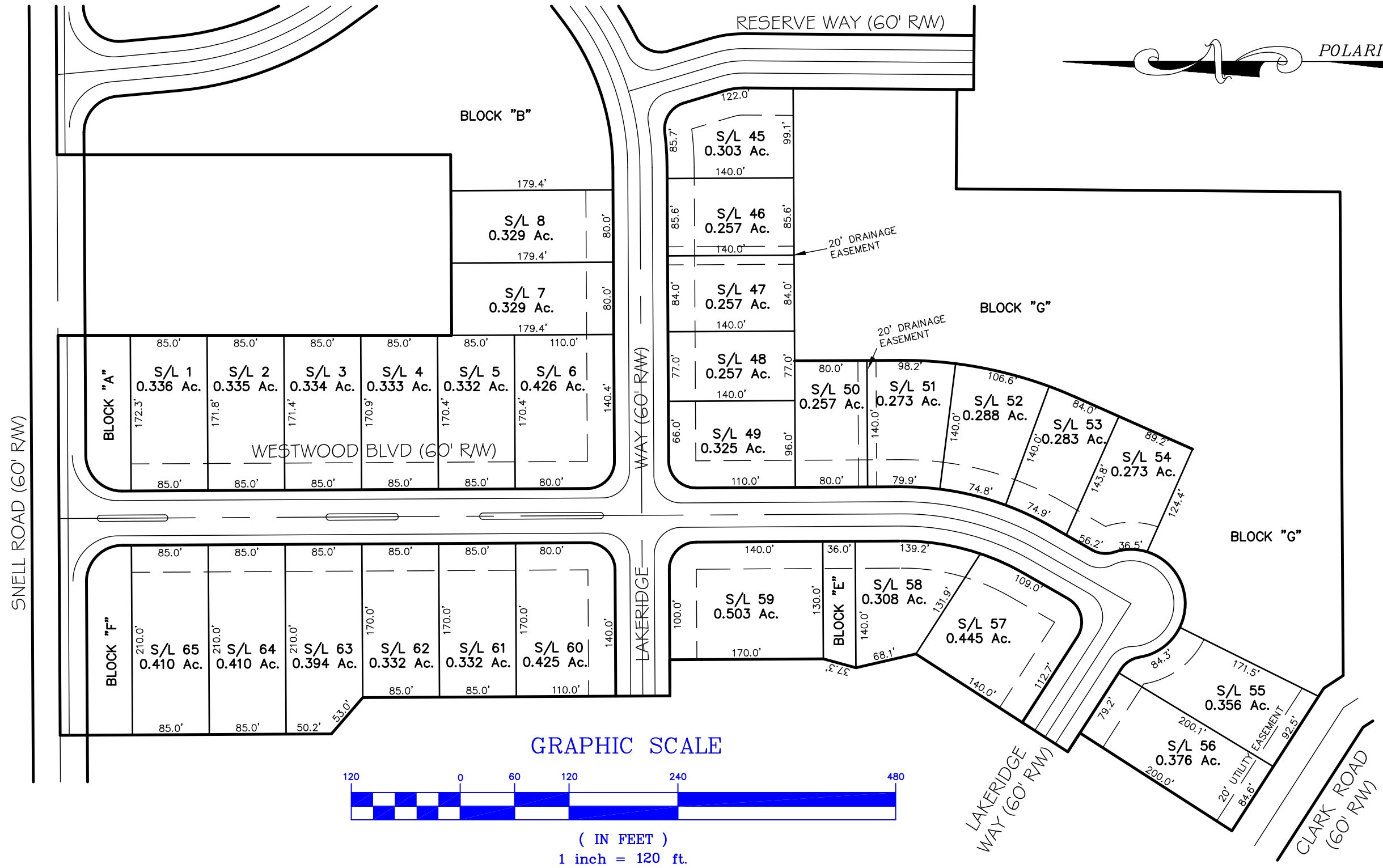
PREPARED BY:



# GARLAND GRIFFIN HOMES PROUDLY PRESENTS: COLUMBIA RESERVE

SUBDIVISION - PHASE 1  
A NEW SINGLE FAMILY COMMUNITY IN  
THE TOWNSHIP OF COLUMBIA - LORAIN COUNTY

CONTACT:  
GARLAND GRIFFIN HOMES  
905 C Canterbury Road, Suite C  
Westlake, Ohio 44145  
Phone: (440) 892-4663  
Fax: (440) 892-4696



GRAPHIC SCALE



( IN FEET )  
1 inch = 120 ft.